

BRITISH OPEN KARATE CHAMPIONSHIPS

Glasgow, Scotland 6th & 7th October 2012

SENIOR, JUNIOR, CADET, CHILDREN

BULLETIN 1

Issued 1st Jan 2012



The only British International tournament sanctioned by the WKF

Closing Date for Entries is 1st Oct 2012



Sponsor of the British Open 2012

UNICEF: The BKF International charity

The BKF supports the children's charity UNICEF. This charity cares for needy children all over the world, please give generously at the championships.

www.britishkaratefederation.co.uk



Dear Friends,

May I take this opportunity to welcome you to 3rd British Open and to the host City of Glasgow.

The event, which has been sanctioned by the WKF, will be in partnership with Unicef in an effort to increase awareness and raise funds for the world's needy children.

The aim of the Unicef-BKF partnership is to provide educational resources for many of these children and we would be delighted if you could support us in this very worthwhile cause.

This year we welcome "Sports Data" as a sponsor of our event. This will allow ease of registration with a simple online process which is now being used at major championships throughout the world.

I look forward to seeing you all in Glasgow, in the meantime I would encourage you all to visit www.seeglasgow.com.

If you require any further information or assistance then please contact jdundas@sigtec.com

Thank you

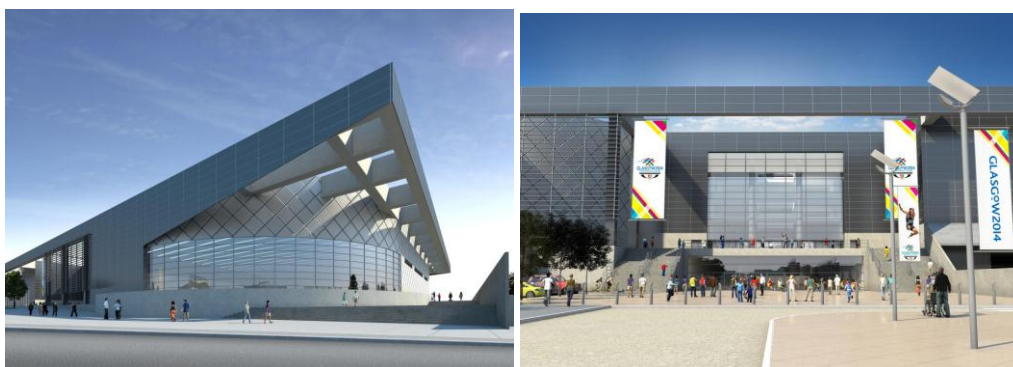
Terry Connell
President: British Karate Federation

Revision list
Nil - todate

Important Event Venue Information

The City of Glasgow will soon be home to the new National Indoor Sports Arena for Scotland. This venue is due to be completed early 2012 and be ready for its first events by the end of September 2012.

This venue is the replacement for the Kelvinhall International Arena and if all plans go well then our event will be staged in the new arena.



Sir Chris Hoy National Indoor Sports Arena

National Indoor Sports Arena (NISA)

In terms of sheer engineering innovation the National Indoor Sports Arena is unparalleled in Scotland and will be one of the largest facilities of its kind in Europe. This will be a fantastic, flexible community facility with its 12 Badminton Court Sports Hall complex that comprises three sports halls with 5,000 spectator seats, dance and fitness studios, external multi-court areas, media, event control and hospitality suites and offices for Governing Bodies of sport and Sportsscotland.

At the touch of a button a top class 200-metre indoor athletics track will be hydraulically lifted from below in order to host the traditional end of January Aviva Indoor Athletics events that is currently hosted in the Kelvin Hall.

We will confirm as soon as possible which venue we will be used for the competition but as you can see it's a great opportunity to be one of the first major contests to be held in this fantastic venue.

John Dundas
BKF Event Organiser

Saturday 6th October 2012

Kata – Disability, Veterans, Juniors & Seniors

Start times are apporx. Be there in plenty of time. Full schedule will be published online prior to the event.

DISABILITY KATA – SATURDAY 6th Oct 2012 Registration 8.30am Start: 9am	
Category	Code
Disability Kata – Male and Female All Grades All Ages	KA100

VETERANS KATA – SATURDAY 6th Oct 2012 Registration 8.30am Start: 9am	
Category	Code
Veterans Kata – Male and Female All Grades 35years and older	KA99

KATA JUNIORS 16/17 YEARS– SATURDAY 6th Oct 2012 Registration: 8.30am – Start: 9am			
Category	Code	Category	Code
Female Junior Kata 16-17yrs	KA1	Male Junior Kata 16-17yrs	KA2

KATA U21 (18/19/20yrs) – SATURDAY 6th Oct 2012 Registration: 8.30am – Start: 9am			
Category	Code	Category	Code
Female Kata 18yrs to 20yrs Inclusive	KA3	Male Kata 18yrs to 20yrs Inclusive	KA4

KATA SENIORS 16YRS PLUS – SATURDAY 6th Oct 2012 Registration: 8.30am – Start: 9am			
Category	Code	Category	Code
Female Seniors Kata (Please note 16yrs + eligible)	KA5	Male Seniors Kata (Please note 16yrs + eligible)	KA6

Saturday 6th Oct 2012 – Kumite Juniors and Veterans

VETERAN OPEN – SATURDAY 6th Oct 2012 Registration: 08.30am – Start: 10am			
Category Female Veterans	Code	Category Male Veterans	Code
Female Veterans 35yrs plus	KU1	Male Veterans 35yrs Plus	KU2

JUNIOR KUMITE (16/17yrs) – SATURDAY 6th Oct 2012 Registration/Weigh In: 9.30am – Start: 11am			
Category Female Junior	Code	Category Male Junior	Code
Female Junior Kumite 16-17yrs - 48kgs	KU3	Male Junior Kumite 16-17yrs - 55kgs	KU7
Female Junior Kumite 16-17yrs - 53kgs	KU4	Male Junior Kumite 16-17yrs - 61kgs	KU8
Female Junior Kumite 16-17yrs - 59kgs	KU5	Male Junior 16-17yrs - 68kgs	KU9
Female Junior Kumite 16-17yrs + 59kgs	KU6	Male Junior Kumite 16-17yrs - 76kgs	KU10
		Male Junior Kumite 16-17yrs + 76kgs	KU11

JUNIOR KUMITE OPEN (16/17yrs) – SATURDAY 6th Oct 2012 Registration: 9.30am – Start: 1pm			
Category Female Junior	Code	Category Male Junior	Code
Female Junior Kumite 16-17yrs Open	KU12	Male Junior Kumite 16-17yrs Open	KU13

JUNIOR KUMITE TEAM (16/17yrs) – SATURDAY 6th Oct 2012 Registration: 11am – Start: 1pm			
Category Female Junior	Code	Category Male Junior	Code
Female Junior Team (3) Kumite 16-17yrs	KT1	Male Junior Team (3) Kumite 16-17yrs	KT2

Saturday 6th Oct 2012 – Kumite U21 and Seniors

UNDER 21 KUMITE (18/19/20yrs) – SATURDAY 6th Oct 2012 Registration/Weigh In: 10am – Start: Midday			
Category Female Junior	Code	Category Male Junior	Code
Female Under 21 (18/19/20yrs) - 53kgs	KU14	Male Under 21 (18/19/20yrs) - 68kgs	KU17
Female Under 21 (18/19/20yrs) -60kgs	KU15	Male Under 21 (18/19/20yrs) - 78kgs	KU18
Female Under 21 (18/19/20yrs) +60kgs	KU16	Male Under 21 (18/19/20yrs) +78kgs	KU19

KUMITE SENIORS – SATURDAY 6th Oct 2012 Registration/Weigh In: Midday – Start: 2pm			
Category Female Seniors	Code	Category Male Seniors	Code
Female Senior Kumite 18yrs and over - 50kgs	KU20	Male Senior Kumite 18yrs and over - 60kgs	KU25
Female Senior Kumite 18yrs and over - 55kgs	KU21	Male Senior Kumite 18yrs and over - 67kgs	KU26
Female Senior Kumite 18yrs and over - 61kgs	KU22	Male Senior Kumite 18yrs and over - 75kgs	KU27
Female Senior Kumite 18yrs and over - 68kgs	KU23	Male Senior Kumite 18yrs and over - 84kgs	KU28
Female Senior Kumite 18yrs and over + 68kgs	KU24	Male Senior Kumite 18yrs and over + 84kgs	KU29

KUMITE SENIOR OPEN WEIGHT – SATURDAY 6th Oct 2012 Registration: Midday – Start: 2pm			
Category Female Junior	Code	Category Male Junior	Code
Female Senior Kumite 18yrs and over Open Weight	KU30	Male Senior Kumite 18yrs and over Open Weight	KU31

KUMITE SENIOR TEAM – SATURDAY 6th Oct 2012 Registration: Midday – Start: 2pm			
Category Female Junior	Code	Category Male Junior	Code
Female Senior Kumite Teams 18yrs and over (3 person team)	KT3	Male Senior Kumite Teams 18yrs and over (3 person team)	KT4

ATHLETES CAN REGISTER FOR MORE THAN ONE CATEGORY AT A TIME

Sunday 7th October 2012

Kata 7 to 13yrs and Cadets (14/15yrs)

KATA TEAM UNDER 14yrs – SUNDAY 7th Oct 2012 Registration: 8.30am – Start: 9am – Event: Team Kata			
Category	Code	Category	Code
Mixed Pairs Team Kata 7 – 10yrs	KAT1	Mixed Pair Team Kata 11 - 13	KAT2

KATA 7 – 13 YEARS INCLUSIVE – SUNDAY 7th Oct 2012 Registration: 8.30am – Start: 9am			
Category	Code	Category	Code
Girls Kata 7-9yrs	KA7	Boys Kata 7-9yrs	KA10
Girls Kata 10-11yrs	KA8	Boys Kata 10-11yrs	KA11
Girls Kata 12-13yrs	KA9	Boys Kata 12-13yrs	KA12

KATA Cadets 14 – 15 YEARS – Sunday 7th Oct 2012 Registration: 8.30am – Start: 9:00am			
Category	Code	Category	Code
Female Cadet Kata 14-15yrs	KA13	Male Cadet Kata 14-15yrs	KA14

KUMITE 7 – 11 YEARS INCLUSIVE – SUNDAY 7th Oct 2012 Registration/Weigh In: 9.30am – Start: 11am			
Category	Code	Category	Code
Girls Kumite 7-9yrs - 25kgs	KU32	Boys Kumite 7-9yrs - 33kgs	KU36
Girls Kumite 7-9yrs + 25kgs	KU33	Boys Kumite 7-9yrs + 33kgs	KU37
Girls Kumite 10-11yrs - 35kgs	KU34	Boys Kumite 10-11yrs - 45kgs	KU38
Girls Kumite 10-11yrs + 35kgs	KU35	Boys Kumite 10-11yrs + 45kgs	KU39

KUMITE TEAM 7 - 9 YEARS INCLUSIVE – SUNDAY 7th Oct 2012 Registration: 9.30am – Start: Midday			
Category	Code	Category	Code
Girls Team Kumite (3) 7 – 9yrs	KT5	Boys Team Kumite (3) 7 – 9yrs	KT7
Girls Kumite Open 7 – 9yrs	KU40	Boys Kumite Open 7 – 9yrs	KU42

KUMITE OPEN & TEAM 10 - 13 YEARS INCLUSIVE – SUNDAY 7th Oct 2012 Registration: 10am – Start: TBC			
Category	Code	Category	Code
Girls Team Kumite (3) 10 – 13yrs	KT6	Boys Team Kumite (3) 10 – 13yrs	KT8
Girls Kumite Open 10 – 13yrs	KU41	Boys Kumite Open 10 – 13yrs	KU43

KUMITE 12 – 13 YEARS INCLUSIVE – SUNDAY 7th OCTOBER 2012 Registration/Weigh In: 11am – Start: TBC			
Category	Code	Category	Code
Girls Kumite 12-13yrs - 45kgs	KU44	Boys Kumite 12-13yrs -45kgs	KU46
Girls Kumite 12-13yrs + 45kgs	KU45	Boys Kumite 12-13yrs + 45kgs	KU47

CADET KUMITE 14 & 15 YEARS – SUNDAY 7th Oct 2012 Registration: Midday – Start: TBC (Afternoon)			
Category Female Cadet	Code	Category Male Cadet	Code
Female Cadet Kumite 14-15yrs - 47kgs	KU50	Male Cadet Kumite 14-15yrs - 52kgs	KU53
Female Cadet Kumite 14-15yrs - 54kgs	KU51	Male Cadet Kumite 14-15yrs - 57kgs	KU54
Female Cadet Kumite 14-15yrs + 54kgs	KU52	Male Cadet Kumite 14-15yrs - 63kgs	KU55
		Male Cadet Kumite 14-15yrs - 70kgs	KU56
		Male Cadet Kumite 14-15yrs + 70kgs	KU57

CADET KUMITE OPEN & TEAM 14 - 15 YEARS – SUNDAY 7th Oct 2012 Registration: Midday . Start: TBC (Afternoon)			
Category Female Cadet	Code	Category Male Cadet	Code
Female Cadet Team (3) Kumite 14-15yrs	KT9	Male Cadet Team (3) Kumite 14-15yrs	KT10
Female Cadet Kumite 14-15yrs Open	KU48	Male Cadet Kumite 14-15yrs Open	KU49

The BKF are pleased to continue to support disabled competitors within karate and are delighted to announce that the Disability Kata contest will this year again feature at the BKF Open. The event will take place on Saturday at 10am for [all ages] for those with a physical or mental disability. The range will depend on demand and as this is a new area for us we ask for understanding on this sensitive matter. Should you enter this category you cannot participate in any other category.

The BKF have published a paper on this which is available on our website and Mike Billman from our executive has been given the task of overseeing this project. Mike can be contacted through our web email address.

DISABILITY KATA – Saturday 6th Oct 2012 Registration 8.30am Start: 9am	
Category	Code
Disability Kata all ages male and female	KUDK 01

Photography and Recording

The BKF will have an official photography who will be taking photographs during the event. These photos will be used for public relations and for use on the BKF website as well as Facebook.

If anyone has any issues please contact BKF Organiser John Dundas (jdundas@sigtec.com)

These images will also be available for Associations, Groups, Clubs and families to download and use as long as BKF are given the credit.

Video and photography use by the general public is **“Free of charge”** but you will have to register on the day of the event at the main centre reception.

Please reframe from encroaching on the matted areas for photography or videoing.

IMPORTANT NOTES

This event is being organised by the British Karate Federation with grateful assistance from the Scottish Karate Governing Body Ltd.

IMPORTANT NOTE FOR COACHES

Repechage will be for JUNIORS and SENIORS Individual Kumite and Kata. No Repechage for Cadets

Competitors can only compete in their own categories and cannot move up to compete in another category.

In the unlikely event of low Category entries the organisers reserve the right to amalgamate categories.

Coaches, please ensure your competitors leave the area when their category finishes, this is a strict rule.

Please advise your competitors accordingly regarding insurance cover.

A maximum of 4 coaches passes per association. Please supply a list of coaches when submitting your application.

Parental consent: This is the responsibility of the association

Coaches Code Of Dress: IMPORTANT

Coaches must be in Association tracksuits or colours etc. and must wear their coaching ID badge. Inappropriate dress will be refused access to the Tatami.

Only coaches ADHERING TO DRESS CODE and in possession of a coaches pass will be allowed on the competition area, these will be supplied at the event. Coaches passes will be provided according to the number of entries up to a maximum of four. All coaches must provide his/her details to the Chief Referee. Only 1 coach is permitted on the Tatami at any one time.

Insurance

It is the responsibility of each individual to have their own insurance cover for the event.

Schedule

Saturday 6th October 2012

All Kata and Kumite will be held under WKF rules.

Kata will start from 9am with individual Kata being the first event. Kumite events will have staggered start times, starting from 10.30 am with registration and weigh in being one hour before. All staggered times are estimated as this will depend on the number of entries in each category.

Sunday 7th October 2012

All Kata and Kumite for 14/15 years and above will be held under WKF rules, WKF face and body protection for 14-15 year olds will be compulsory.

All Kata events will start at 9am with the individual kata being the first event. Registration will be from 8.30am.

For 13 years and under, competitors may choose which ever Kata they wish to perform and this can be repeated in all subsequent rounds.

All staggered times are estimated as this will depend on the number of entries in each category.

Minimum age is 7yrs and above for all Kata and Kumite.

From Chief Referee (C. Mbakwe WKF Referee)

Could all Associations and coaches be advised that the WKF rules will be strictly applied in all categories for 14 years and above with the exception of recharge for Cadets. Juniors and Senior Individual Kata/Kumite will have recharge.

Transport Information

Glasgow is very well connected by Road, Rail and Air. Within the Central belt of Scotland there are 3 main airports.

Airports

Glasgow International Airport	- 8 miles from Glasgow City Centre
Glasgow Prestwick Airport	- 29 miles from Glasgow City Centre
Edinburgh Airport	- 45 miles from Glasgow City Centre

Main Line Railway Stations

Glasgow Queen Street Station
Glasgow Central Station

Airlines Glasgow International Airport (GLA)

Aer Lingus	Air Southwest	BMI	BMIbaby
British Airways	Canadian Affair	Continental	Easyjet
Emirates	Flybe	Jet2	Icelandair
KLM	Onur	Spainair	Thomson
Thomas Cook	US Airways		

Airlines Edinburgh Airport (EDI)

Aer Arann	Aer Lingus	Air France	Austrian
BMI	BMIbaby	British Airway	Continental
Easyjet	Flybe	Germanwings	Jet2
KLM	Lufthansa	Norwegian	Ryanair SAS
	Thomas Cook	Thomson	

Airlines Glasgow Prestwick Airport (PIK)

Ryanair Wiz Air

Airline Websites

Aer Lingus www.aerlingus.com
 Air France www.airfrance.com
 Austrian www.aua.com
 BMIbaby www.bmibaby.com
 Continental www.continental.com
 Emirates www.emirates.com
 Germanwings www.germanwings.com
 Jet2 www.jet2.com
 Norwegian www.norwegian.com
 Pakistan (PIA) www.piac.com.pk
 SAS www.flysas.com
 Thomas Cook www.thomascook.com
 US Airways www.usairways.com
 Canadian Affair www.canadianaffair.com

Aer Annan www.aerarann.com
 Air Southwest www.airsouthwest.com
 BMI www.flybmi.com
 British Airways www.ba.com
 Easyjet www.easyjet.com
 Flybe www.flybe.com
 Icelandair www.icelandair.com
 KLM www.klm.com
 Onur Air www.onurair.com.tr
 Ryanair www.ryanair.com
 Spainair www.spainair.com
 Thomson www.thomson.co.uk
 Wiz Air www.wizzair.com

Glasgow International Airport Public Transport Links

Trains

The nearest rail station to the airport is Paisley Gilmour Street, which is just one mile from the terminal and easily reached by taxi or bus (services 66 and 300).

There are 8 trains an hour from Paisley Gilmour Street to Glasgow Central (5 ph on Sundays). Rail tickets to Glasgow Central, via Paisley Gilmour Street, can be purchased from the SPT Travel Centre on the ground floor of the airport terminal, next to domestic arrivals.

Airport Express Bus Service 500

Services to Glasgow city centre Service 500 (www.glasgowflyer.com) The Arriva Glasgow Flyer provides a high-frequency bus service to and from Glasgow City Centre and Buchanan bus station (stand 46). This service leaves from Bus Stop 1.

Services run up to every 10 minutes and journey time is 15 minutes to the City Centre. The bus service stops at all major City centre hotels and Strathclyde University.

Single fare: £4.20 Adult Return: £6.20 Adult Open Return: £6.50

Airlink City Bus Service 747

Service 747 AirLink (www.firstgroup.com) service operates between Glasgow Airport and the city centre via Partick, Kelvingrove Art Gallery and Charing Cross.

Buses run up to every 20 minutes and journey time to Buchanan bus station is around 48 minutes. Service 747 provides direct access to many visitor hotels in the West end. This service leaves from Bus Stop 8.

Single fare: £4 Return: £5. Plus

Buses to Railway Station Service 66 and 300

These buses leave on a frequent basis and stop at Paisley Gilmour Street railway station. Service 66 leaves from Stand 7 and Service 300 leaves from Stand 6.

Edinburgh Airport Public Transport Links

There is no direct public transport link between Edinburgh Airport and Glasgow City Centre. The journey requires a bus and a train trip which should take approx. 1hr 30 minutes.

Edinburgh Airlink 100 is an express bus service runs from the airport to Waverley Bridge beside Waverley Street main railway station. The bus runs every 10 minutes to 15minutes. Journey time 25 minutes.

Fare: Single £3.50, Return £6 (reductions for children).

Buy tickets at the airport information desk, at the bus stop or from the driver
Train from Edinburgh Waverley Station to Glasgow Queen Street depart every 15 minutes with a journey time of 50 minutes.

Fare: Return Adult £22.00 Return Child £11.50

Glasgow Prestwick Airport Public Transport Links

Trains

Glasgow Prestwick is served by its own railway station which is accessible by a covered walkway to/from the airport.

From Airport
0548 – 2308 Monday – Saturday 0850 – 2307 Sunday

From Glasgow
0600 – 0015 Monday – Friday 0600 - 2330 Saturday 0900 -2300 Sunday

1/2 Price Rail Travel

All passengers travelling to and from the airport will receive 50% discount on the standard fare. Passengers joining the train at Prestwick Airport require to show their official flight confirmation and photo id to the train conductor when buying their ticket, as there is no ticketing office at Prestwick Airport.

Bus Services

X77 Express Bus Service Prestwick

Glasgow Prestwick Airport is served by Stagecoach Western X77 Express Service and operates to/from Glasgow Buchanan Street Station. This is a direct service which stops outside the airport on the A79.

X77 From Airport 0639 - 2034 Monday – Saturday 0810 – 1810 Sunday
X77 From Glasgow 0735 - 2330 Monday – Saturday 0905 – 1905 Sunday

Journey time is 50 minutes

Stagecoach Western runs the bus service between the Airport Terminal and Glasgow Buchanan Bus

Station from 06:30 - 22:20 for more details click below.

Glasgow Prestwick Airport Public Transport Links (Continued)

Late Evening Bus Services From Prestwick Airport

The X99 airport express bus service offers passengers, who arrive on late evening flights out with public transport times, a direct service between the airport and Glasgow. Passengers are strongly recommended to pre-book tickets, although they can be purchased from the driver on the day of travel subject to availability.

Depart: Glasgow Prestwick Airport - Side of Terminal 23:59 pm

Arrive: Glasgow Buchanan Bus Station Stance 1 01:00 am

Early Morning Bus Service to Prestwick Airport

The X99 airport express bus service offers passengers, who require to check-in prior to 07:30 on weekdays and 10:00 on Sundays, a fast, comfortable and reliable service between Glasgow and the airport.

Depart: Buchanan Bus Station Stance 1 04.30am

Arrive: Glasgow Prestwick 05.15 am

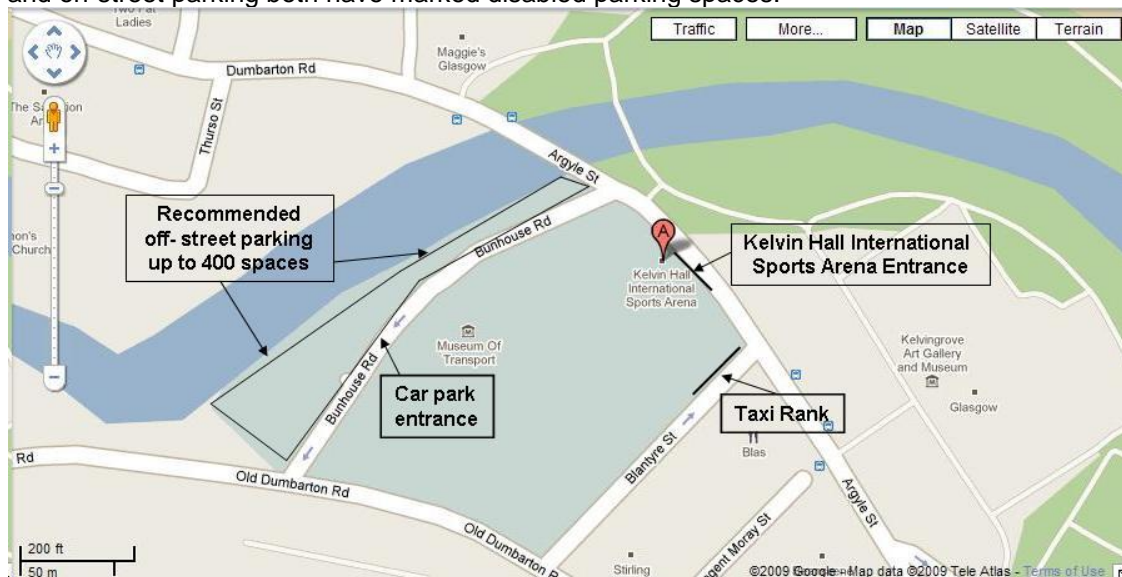
To buy tickets online visit www.gpia.co.uk/AirportInfo/HowTo/bus.asp Or by telephoning 08712 222 883. (UK calls only). Tickets are only valid for the X99 service.

Fares: £8 single (pre book) £9 single (standard fare)

Car Parking at the Venue (Kevlinhall Venue)

Below you will find a map that shows the locations of various car parking areas around the main venue. Both areas are covered by payment parking meters for the Saturday and Sunday. You will require change for these machines.

The main car park has 400 spaces and is cheaper than the on-street parking. The car park and on-street parking both have marked disabled parking spaces.



Accommodation

Glasgow has a very large range of hotel accommodation from group specialist thru to 5 star hotels. The BKF have been working in partnership with "Glasgow City Marketing Bureau" and its members to bring you some of the best deals in accommodation.

As well as hotels the University of Glasgow and Strathclyde University have offered their accommodation at low rates for the weekend of the event. Excellent for squads.

Main Hotel Booking Site "SeeGlasgow"

The Glasgow City Marketing Bureau offer some of the best discounted rates to visitors to the City. Prices for hotels start at £40 per night including a full Scottish breakfast. All the main hotels can be booked from this website. To check on availability and make a booking visit www.seeglasgow.com

University Of Glasgow Accommodation

Queen Margaret Residence - Queen Margaret Residence is situated near to the Botanic Gardens. 3 Miles to main venue. The accommodation comprises of en suite rooms with access to a shared well-equipped kitchen. All guests also have access to a common lounge area. The 2011 rate for this residence is £35.75 per person per night (self-catering but inclusive of a breakfast muffin and juice).

Wolfson Hall - Wolfson Hall is situated in the West of Scotland Science Park in a quiet woodland area about 20 minutes drive from the main venue and city centre. All rates include a full Scottish breakfast and all guests have access to a shared TV room and common room. The rate is from £25.00 per room per night (bed and breakfast).

Cairncross House - Cairncross House is a perfect base to explore Glasgow. It is within easy walking distance of the University and the city centre and close to local amenities such as shops, bars and restaurants. It is only a few miles from the main venue. All rooms are standard with wash hand basin and self-catering with access to a shared kitchen and lounge/TV area. The rate for this residence is £19.25 per person per night (self-catering).

For facts and photographs of our residences, please follow this link:

<http://www.gla.ac.uk/services/cvso/accommodation>

University of Strathclyde

The University of Strathclyde's city centre campus is the ideal location for all visitors to the city.. They are delighted to offer you Bed and Breakfast and also Self Catering. Bed and Breakfast can be in either of our standard or en suite single bedrooms. Self catering is in standard single bedroom flats, available for a minimum 4 persons.

Contact: Mary Young on UK +44 (141) 548 3604 Email mary.young@strath.ac.uk

Pond Hotel Glasgow Special Rates

The Pond Hotel is only 15 minutes from the main venue. The hotel has offered a special rate to the BKF for the weekend of the competition. The hotel has 137 rooms and free car parking.

Double room for sole use £60.00 Bed & breakfast per room per night

Double or Twin for 2 people £70.00 Bed & Breakfast per room per night.

Please Quote "British Karate Federation" when booking either via telephone number +44 141 334 8161 or reservation@pondhotel.com

Visitor Requirements to Enter the UK

The UK Border Agency is responsible for securing the United Kingdom's borders and controlling migration. They consider applications for permission to enter or stay in the United Kingdom (UK) through their visa services around the world.

To check if you require a visa please visit the UK Border Agency Visa website which gives you information and guidance about which nationalities need UK visas to enter the country.
www.ukvisas.gov.uk

General Information

Time Zone GMT+1 (British Summer Time)

Voltage: 220V/50Hz

Weights and sizes: Metric System

Weather Oct: Aver 50deg F/9deg C Shops:

Supermarkets: Most open 7 days a week.

Mobile Phone: Vodafone, Orange, O2, T-Mobile, 3G

Currency: British Pound £

Vaccination Required : No

Credit Cards: All major cards

Most open 7 days a week

Banks: Mon-Fri 9am - 5pm

Transportation Links: Underground, bus and rail. (www.spt.co.uk for further information)

Emergency Medical Treatment

Glasgow has a number of Accident and Emergency units. The closest one to the main venue is the Western Infirmary (approximately ½ mile from the venue).

Glasgow Western Infirmary. 24hrs Accident and Emergency Service. Tel: 0141 211 2000

Emergency Phone Number

If you require the Police, Fire Service or Ambulance in an emergency then you must call “999”. This will put you through to an operator who will ask you which service you require. They will then transfer your call to the relevant service.

Drinks and Food at Venue

There will be a café that will operate throughout the day. There are also a number of vending machines onsite and nearby shops.

Disabled Access and Parking

The venue has disabled parking bays at the side of the building (see parking map) and also full disabled access

Registration & Payment

The British Karate Federation are pleased to announce that “*Sports Data*” is now a major sponsor of the “British Open 2012”. “*Sports Data*” is approved by the “World Karate Federation”. Many major championships around the world are now using “Sports Data”

Sports Data allows for “OnLine” Registration of your entry as well as paying for your entry via Paypal.

You will be able to see all the entries for the contest as well as the draw sheets once they have been generated.

For online registration visit : www.sportdata.org

For help on how to register online visit :

http://www.sportdata.org/set-online/faq_en.php?active_menu=faq

We will still accept registrations via postal service and email. This year you will also be able to pay by “Paypal” for your entry.

Email entries: jdundas@sigtec.com

Post: BKF2012 c/o John Dundas, 26 Balgray Road, Glasgow, G77 6PB, United Kingdom

Payment Options

Online registration Pay with Paypal or request invoice and then pay by cheque.

Postal entries: Pay with Paypal invoice will be sent on receipt of entries or pay by cheque

Email entries: Pay with Paypal invoice will be sent on receipt of entries or pay by cheque

Paypal address : jdundas@sigtec.com Mark all payments BKF 2012

Cheques made payable to “British Karate Federation”



Coach Passes

Name	Date Of Birth	Coach Number

Coaches can also be registered online

ENTRY FORM

ASSOCIATION:		COUNTRY:	
CONTACT NAME:	TELEPHONE:	E-MAIL:	
FULL ADDRESS:			

I confirm that all the competitors entered on this sheet have received my advice of and accept the following statement:

"The competitor realises and discharges the organisers and their representatives or agents and all other competitors from all claims that the competitor or his personal representative may have for any injury (however caused) sustained by the competitor and for the loss or damage (however caused) to his personal belongings suffered at any time during the course of the Championships or while on the premises at which the Championships are being held".

SIGNED

BY COACH.....PRINT.....LICENCE NO.....

ENTRY FORM

Individual Entry £15.00 per event

[illegible]

Team Entry Form

ASSOCIATION:		COUNTRY:	
COACHES NAME:	TELEPHONE:	E-MAIL:	

CATEGORY	CODE	TEAMS	COST TEAM	TOTAL COST
Mixed Pairs Team Kata 7 – 10yrs	KAT1		£20.00	
Mixed Pair Team Kata 11 - 13	KAT2		£20.00	
Female Junior Team Kumite 16 – 17 yrs	KT1		£30.00	
Male Junior Team Kumite 16 – 17 yrs	KT2		£30.00	
Female Senior Team Kumite 18 yrs +	KT3		£30.00	
Male Senior Team Kumite 18 yrs +	KT4		£30.00	
Girls Team Kumite 7 - 9 yrs	KT5		£25.00	
Girls Team Kumite 10 - 13 yrs	KT6		£25.00	
Boys Team Kumite 7 - 9 yrs	KT7		£25.00	
Boys Team Kumite 10 - 13 yrs	KT8		£25.00	
Female Cadet Team Kumite 14 – 15	KT9		£30.00	
Mal Cadet Team Kumite 14 – 15	KT10		£30.00	

	TOTAL KATA	TOTAL KUMITE	COST EACH	TOTAL COST

Spectator Fees

Type	Days	Cost	Days	Cost
Adult	1	£8	2	£12
Children under 18	1	£5	2	£8
Family 2x2	1	£17	2	£22

Total amount payable: £_____

See Registration and Payment page for further details