



KARATE1
PREMIER LEAGUE

JAKARTA
INDONESIA

June, 23 - 24 2012



KARATE 1 - JAKARTA 2012

WKF PREMIER LEAGUE



"The Karate1 WKF Premier League is the prime league event in the world of Karate. Together with the WKF Karate1 World Cup (WWC) it is a series of world class Karate competitions recognized and supported by the World Karate Federation."

Its aim is to bring together the best Karate competitors in the world in a series of open championships of unprecedented scale and quality. For Karate practitioners and enthusiasts around the world, the Premier League acts as a source of identification, motivation and inspiration."



JAKARTA, 23-24 JUNE 2012



CONTENTS

	<u>Page</u>
WELCOME.....	4
INTRODUCTION OF WKF PREMIER LEAGUE.....	6
ORGANIZER AND CONTACT.....	7
DATE OF COMPETITION.....	7
REGISTRATION.....	10
CATEGORIES.....	11
PAYMENT.....	11
COMPETITION VENUE.....	11
PRIZE AND MONEY.....	12
RANKING.....	12
TICKETS FOR SPECTATORS.....	13
OPTIONAL REFEREE & JUDGES SEMINAR LED by Mr. Con Kassis.....	13
SCHEDULE/PROGRAMME FOR THE COMPETITION.....	13
HEADQUARTER HOTEL.....	14
GENERAL INFORMATION.....	15
ABOUT INDONESIA.....	15
SOEKARNO HATTA INTERNATIONAL AIRPORT.....	17
TAXIS.....	19
HOTELS.....	20



WELCOME

WELCOME REMARK FROM CHAIRMAN OF THE ORGANIZING COMMITTEE



Dear Ladies and Gentlemen,

First of all, as the Chairman of the Organizing Committee allow me to invite you and your delegation leaders, honorable guests, officials and contestants to attend and to participate in the Karate1 - Premier League on June 23 - 24, 2012 located in Tennis - Indoor, Jakarta - Indonesia.

Especially to all National Karate Federation from Asia - Pacific region which are nearby with Jakarta - Indonesia, it is a very good chance to send your team and delegation to participate in part of a series of world class karate competition recognized and supported by WKF.

Beside the Karate1 - Premier League karate competition, we also organized the International Referee & Judges Seminar led by Mr. Con Kassis, Chairman of WKF Referee Council on June 21 - 22, 2012 located in Ballroom Hotel Sultan (Headquarter Hotel). The said seminar will be very beneficial for your referees & judges to learn more about WKF new rule.

We look forward to having the opportunity to extend our hospitality to your team and officials attending. Please find enclosed the event schedule, hotel, transportation information and other information.

Thank you so much for your kind attention and support to our event.

Kind regards,

Drs. Syafruddin, M.Si

Chairman of the Organizing Committee



GREETING FROM PRESIDENT OF FORKI



Dear President, Sihan, Sensei,

As the President of Indonesia Karate-do Federation (FORKI), it is a great pleasure and honor for us that FORKI was entrusted by World Karate Federation (WKF) to organize the Karate1 - Premier League on June 23 - 24, 2012 located in Tennis Indoor, Jakarta.

Our special thanks to Mr. Antonio Espinos, President of WKF for his kind attention and support to converting our yearly Indonesia Open Karate Championship to the Karate1 - Premier League, a series of world class karate competitions recognized and supported by WKF.

Please be informed that 2 (two) days prior of Premier League competitions namely on June 21 - 22, 2012, we also will organized the 5th Referee & Judges Seminar led by Mr. Con Kassis, Chairman of WKF Referee Council in Jakarta located in Sultan Hotel, the Headquarter Hotel .

The said seminar supported by WKF and will be very good reference and interaction among the referee, as well as for improving the knowledge and skill of your International Referee under WKF new rules.

All of us will perform together a high quality competition and we do hope that you will enjoy your stay in Jakarta, the capital city of Indonesia.

Best regards / Oss,

Drs. H. Hendardji Soepandji, S.H

President of FORKI



INTRODUCTION OF WKF KARATE 1 PREMIER LEAGUE

The **WKF Karate1 Premier League (WPL)** is the prime league event in the world of Karate. Together with the **WKF Karate1 World Cup (WWC)** it is a series of world class Karate competitions recognized and supported by the **World Karate Federation**. It is the only series of world class Karate competitions recognized and supported by the World Karate Federation.

Its aim is to bring together the best Karate competitors in the world in a series of open championships of unprecedented scale and quality.

In addition to the World Championships, which are biennial events, the Karate1 provides a platform for staging world Karate events on a regular basis and thus enhances interest of the public and the media, both nationally and worldwide. For Karate practitioners and enthusiasts around the world Karate1 acts as a source of identification, motivation and inspiration.

The hosting countries get the chance to present themselves to a wide audience, while giving their athletes the opportunity of competing at the highest level.

And, last but not least, the top Karate athletes of the world obtain an additional platform to compete, improve their skills, attract sponsors and create income.

Karate1 events are **open for all karatekas worldwide**, which

- are members of national federations recognized by WKF
- have a WKF-ID
- have a valid WKF-ID-Card

The WKF ID card can directly purchased at the official registration session of each Karate1 event.

The medalists in every category receive **prize money**.

Competitors can earn **ranking points** in every Karate1 event according to the official WKF Karate1 ranking system.

The competitor of each category with the highest score at the end of the Karate1 season is called the **Grand Winner** and receives **extra prize money**.



ORGANIZER AND CONTACT

ORGANIZER CONTACT:

Deputy Chairman
Iwan Setiawan
Indonesia Karate-Do Federation (FORKI)
Gedung Direksi Gelora Bung Karno 8th floor
Jl. Pintu Satu Senayan
Jakarta Selatan - 88306
Indonesia
Phone/fax: +62 21 5711801
Email : iwan-st@primacom.co.id

TECHNICAL SUPPORT FOR ONLINE REGISTRATION:

Web : <http://www.sportdata.org/karate1>
Email : karate1@sportdata.org

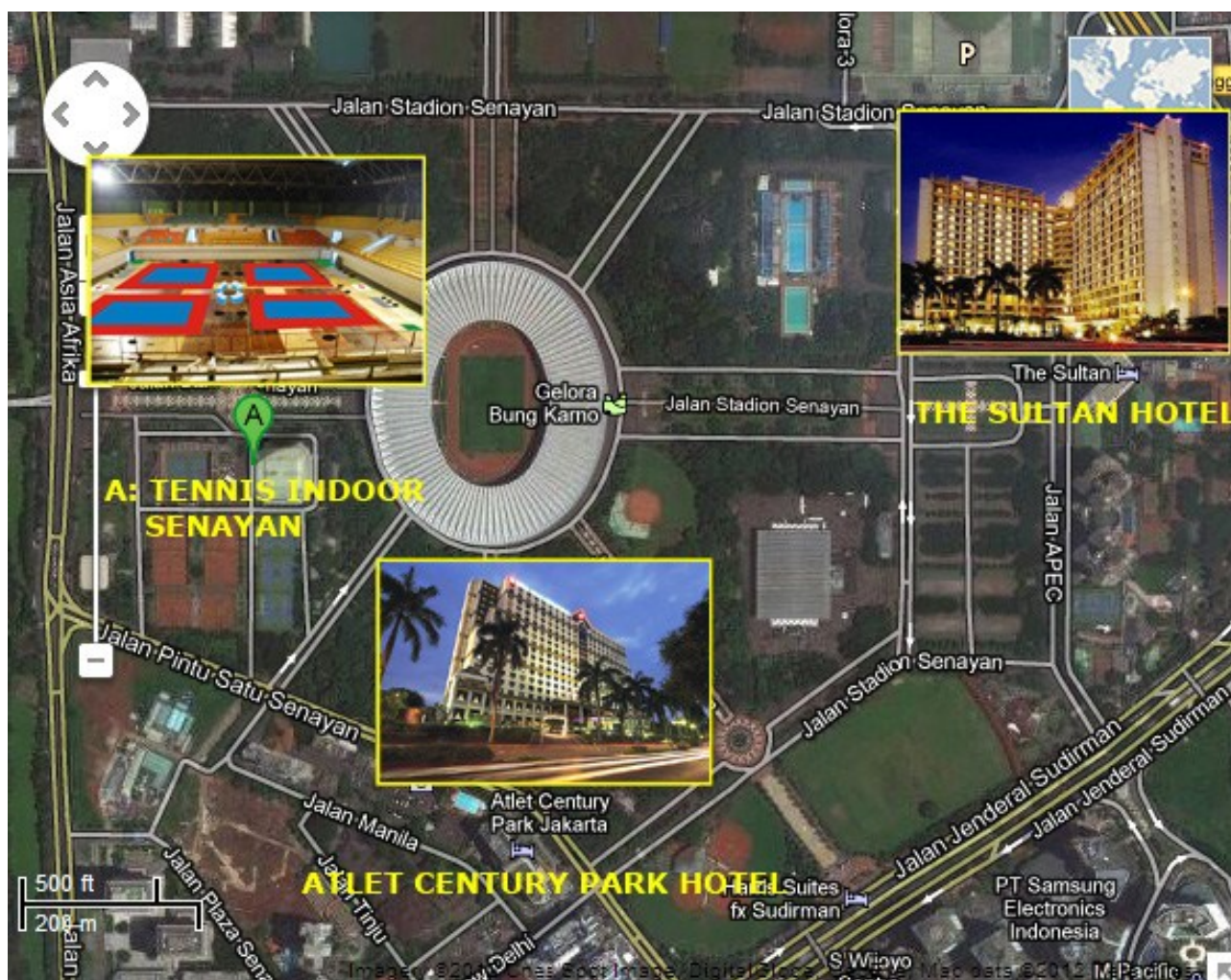
DATE OF COMPETITION

DATE : Saturday, 23 June 2012 to Sunday, 24 June 2012

COMPETITION VENUE

NAME : TENNIS INDOOR SENAYAN
ADDRESS : Kompleks Stadium Tennis Gelora Bung Karno
Jl. Pintu Satu Senayan
CITY : Jakarta
POST CODE: 88306
COUNTRY : Indonesia

TENNIS INDOOR SENAYAN ON MAP



PHOTOS OF TENNIS INDOOR SENAYAN





REGISTRATION

All competitors, referees, coaches and officials must register online using the online system on <http://www.sportdata.org/karate1>. In case of any questions concerning the online registration please directly contact the sportdata software team via the email address office@sportdata.org.

Clubs / teams / federations are responsible for the quality of the entered registration data. Changes of online registration data are possible until 10th of June 2012

The official registration session will take place Friday, 22nd June 2012 from 14:00-20:00 hrs (2-8pm) at the Headquarter Hotel, The Sultan.

The address is: Jl. Gatot Subroto, Jakarta 10002, Indonesia. Telp. +62 21 5703600, Fax. +62 21 5733089, Email: hotel@sultanjakarta.com, www.sultanjakarta.com.

At registration, accreditation cards will be issued with the participants main data, a photograph and information about registered categories. The accreditation card must be worn at all times during the event.

Participation is limited to holders of valid WKF ID cards. Validity of WKF ID cards will be verified during the registration session.

The WKF ID card can be purchased at the registration session.

Attention: only members of national federations recognized by WKF are admitted to participate.

Any athlete not registered by their national federation who wishes to participate in the Premier League event will have to present a relevant letter granting him the authorization by his/her national federation to take part in such event or he/she shall be granted the WKF permission to do so.



CATEGORIES

- Kata individual female and male (16 years and older)
- Kata Team female and male (16 years and older)
- Kumite individual female (18 years and older):
-50 kg, -55kg, -61 kg, -68 kg, +68kg
- Kumite individual male (18 years and older):
-60 kg, -67 kg, -75 kg, -84 kg, +84 kg

Entry Fee

The tickets are EUR 40,- per individual category and EUR 60,- per team category.

PAYMENT

Payment is only possible via:

- Paypal on www.sportdata.org
- Bank Transfer to the following account:
 - Owner of Account : Pengurus Besar FORKI
 - Name of Bank : Bank Mandiri - Casablanca Branch - Jakarta
 - Account Number : 124-00-0106058-2
 - BIC/SWIFT code : BMRIIDJA
- Or cash at the official session on Friday, 22nd of June 2012

COMPETITION RULES

WKF RULES / KARATE1 RULES

For all categories the official WKF rules / Karate1 rules are applied. Only WKF Approved protective equipment is allowed to use. Athletes have to bring their equipment.



PRIZE MONEY

FOR INDIVIDUAL CATAGORIES (KUMITE AND KATA)

- Gold Medalist EUR 500.-
- Silver Medalist EUR 300.-
- Bronze Medalist EUR 100.-

FOR KATA TEAM CATAGORIES

- Gold Medalist EUR 600.-
- Silver Medalist EUR 400.-
- Bronze Medalist EUR 200.-

RANKING

Competitors can earn ranking points in every Karate1 event according to the official WKF Karate1 ranking system (www.wkf.net).

Karate1 WKF Premier League ranking starts new by the first event of a Premier League season.

After each WKF Premier League event new ranking lists are issued on this website: www.wkf.net.

For each category, the competitor with the highest ranking score will be the grand winner of this category.

Grand winners (Karate1 champions) have to participate in 80 % of all Karate1 Premier League events.

Grand winners (Karate1 champions) at the end of the WKF Karate1 season receive extra price money.

The results of each Karate1 event will also influence the official continuous WKF World Ranking List.



TICKETS FOR SPECTATORS

Tickets can be purchased via the online ticketing shop on <http://setopen.sportdata.org/karate1-tickets/> and on the day of event.

OPTIONAL REFEREE & JUDGES SEMINAR LED by Mr. Con Kassis

DATE : June 21st - 22nd 2012

PLACE : Ballroom Sultan Hotel (Headquarter Hotel)

REGISTRATION FEE: USD 100,- (included two coffee breaks, but excluded lunch)

SCHEDULE / PROGRAMME FOR THE COMPETITION

FRIDAY, 22ND OF JUNE 2012

- 10 a.m. to 9 p.m. : Registration and Weight-In

SATURDAY, 23RD OF JUNE 2012

- Kata Individual female Seniors
- Kata Individual male Seniors
- Kata Team female Seniors
- Kata Team male Seniors
- Kumite Individual female -61 Kg
- Kumite Individual male -75 Kg
- Kumite Individual female -68 Kg
- Kumite Individual male -84 Kg

SUNDAY, 24TH OF JUNE 2012

- Kumite Individual female -50 Kg
- Kumite Individual male -60 Kg

- Kumite Individual female +68 Kg
- Kumite Individual male +84 Kg
- Kumite Individual female -55 Kg
- Kumite Individual male -67 Kg

Notice: a more detail schedule will be available for and provided to all teams after the registration session on Friday 22nd of June 2012.

HEADQUARTER HOTEL

THE SULTAN HOTEL
JL. GATOT SUBROTO
JAKARTA 10002
INDONESIA
TEL.: +62 21 5703600, FAX.: +62 21 5733089
EMAIL: hotel@sultanjakarta.com
WEB: www.sultanjakarta.com



Notice: a more detail for The Sultan Hotel will be provided in General Information section.

GENERAL INFORMATION

It is an honor to be the host for WKF Karate1 Premier League that will be held on 23-24 June 2012. In order to give the best for all participants, below will be some important information that may be useful for participants during the time in Indonesia.

ABOUT INDONESIA



Indonesia is an independent republic consisting of more than 17,500 islands spread over 3,400 miles along the Equator. The main islands are Java, Sumatra, Bali, Kalimantan (Borneo), Sulawesi (Celebes), Papua, Halmahera and Seram. The capital city of Jakarta lies in the lowlands of West Java, the most populated island. The country has approximately 245 million people and more than 300 ethnic groups. Indonesia is a developing country with a growing economy, it has many tourist destinations associated with the country's cultural diversity and natural resources. The following is some useful highlights about Indonesia:

History - The name Indonesia derives from the Latin Indus, meaning "India", and the Greek nesos, meaning "island". The name dates to the 18th century, far predating the formation of independent Indonesia. In 1850, George Earl, an English ethnologist, proposed the terms Indunesians –for the inhabitants of the "Indian Archipelago". As early as the first century BCE Indonesian vessels made trade voyages as far as Africa. Indonesia's strategic sea-lane position fostered inter-island and international trade. For example, trade links with both Indian kingdoms and China were established several centuries BCE. By the time of the Renaissance, the islands of Java and Sumatra had already enjoyed a 1,000-year



heritage of advanced civilization spanning two major empires. During the 7th-14th centuries, the Buddhist kingdom of Srivijaya flourished on Sumatra. At its peak, the Srivijaya Empire reached as far as West Java and the Malay Peninsula. Also by the 14th century, the Hindu Kingdom of Majapahit succeeded in gaining allegiance from most of what is now modern Indonesia and much of the Malay archipelago as well. Islam arrived in Indonesia sometime during the 12th century and, through assimilation, supplanted Hinduism by the end of the 16th century in Java and Sumatra. For most of the colonial period, Dutch control over the archipelago was tenuous outside of coastal strongholds; only in the early 20th century did Dutch dominance extend to what was to become Indonesia's current boundaries. The Japanese invasion and subsequent occupation during World War II ended Dutch rule, and encouraged the previously suppressed Indonesian independence movement. On August 17th, 1945, Sukarno, an influential nationalist leader, declared independence and was appointed as the 1st president of Indonesia.

Area - Indonesia consists of 17,508 islands, about 6,000 of which are inhabited. These are scattered over both sides of the equator. The five largest islands are Java, Sumatra, Kalimantan (the Indonesian part of Borneo), New Guinea (shared with Papua New Guinea), and Sulawesi. Indonesia shares land borders with Malaysia on the islands of Borneo and Sebatik, Papua New Guinea on the island of New Guinea, and East Timor on the island of Timor. Indonesia also shares borders with Singapore, Malaysia, and the Philippines to the north and Australia to the south across narrow straits of water. The capital, Jakarta, is on Java Island and is the nation's largest city, followed by Surabaya, Bandung, Medan, and Semarang. At 1,919,440 km² (741,050 sq mi), Indonesia is the world's 16th-largest country in terms of land area. Its average population density is 134 people per km² (347 per sq mi), 79th in the world, although Java, the world's most populous island, has a population density of 940 people per km² (2,435 per sq mi).

Climate - Lying along the equator, Indonesia has a tropical climate, with two distinct monsoonal wet and dry seasons. Average annual rainfall in the lowlands varies from 1,780-3,175 millimeters (70-125 in), and up to 6,100 millimeters (240 in) in mountainous regions. Mountainous areas—receive the highest rainfall. Humidity is generally high, averaging about 80%. Temperatures vary little throughout the year; the average daily temperature range of Jakarta is 26-30 °C (79-86 °F).

Population and Language - Most Indonesians are descended from Austronesian-speaking peoples whose languages can be traced to Proto Austronesian (PAN). The other major grouping are Melanesians, who inhabit eastern Indonesia. There are around 300 distinct native ethnicities in Indonesia, and 742 different languages and dialects. The largest ethnic group is the Javanese, who comprise 42% of the population. The Sundanese, ethnic Malays, and Madurese are the largest non-Javanese groups. Chinese Indonesians comprise 1% of the population. A sense of Indonesian nationhood exists alongside strong regional identities. The official national language, Indonesian, is universally taught in schools, and consequently is spoken by nearly every Indonesian. It was constructed



from a lingua franca that was in wide use throughout the region, and is thus closely related to Malay which is an official language in Malaysia and Brunei. Most Indonesians speak at least one of the several hundred local languages (bahasa daerah), often as their first language.

Religion - Religious freedom is stipulated in the Indonesian constitution, while the government officially recognizes six major religions: Islam, Protestantism, Roman Catholicism, Hinduism, Buddhism, and Confucianism. Indonesia is the world's most populous Muslim-majority nation, with 86.1% of Indonesians declared Muslim according to the 2000 census, 8.7% of the population is Christian, 3% are Hindu, and 1.8% Buddhist or other.

Time zone - GMT + 7.

Electricity - The standard electrical voltage in Indonesia is 220 volts AC, 50Hz. The majority of electrical outlets take rectangular two-pin plugs; adapters are available at shops and supermarkets.

Currency - The local currency is the Indonesia Rupiah (IDR), the currency sign is "Rp". The exchange rate of USD 1 is approximately Rp 9,200. All major currencies and travelers' cheques can be exchanged at banks, hotels or moneychangers with handling charges. Credit cards are widely accepted in Indonesia.

Visa - Expiration date of the passport must be at least 6 months at the date of entry into Indonesia. Check with any Indonesia embassy or consulate for the latest status.

SOEKARNO HATTA INTERNATIONAL AIRPORT

Jakarta International Airport (Soekarno-Hatta) is the main airport serving the greater Jakarta area on the island of Java, Indonesia. The airport is named after the first President of Indonesia, Soekarno, and the first vice-president, Mohammad Hatta. The airport is often called Cengkareng by Indonesian. Its IATA code, CGK is originated from the word Cengkareng, a subdistrict located to the northwest of the city. Jakarta International Airport has 150 check-in counters, 30 baggage carousels and 42 gates. Each sub-terminal has 25 check-in counters, 5 baggage carousels and 7 gates.

SOEKARNO HATTA INTERNATIONAL AIRPORT ON GOOGLE MAP



CHECK-IN COUNTERS AT SOEKARNO HATTA INTERNATIONAL AIRPORT



TAXIS

We recommend all participants to use taxi for transportation during the time in Jakarta. There are a lot of good taxi services provided, and we would like to provide you contact numbers for one of the best taxi in Jakarta, The BlueBird Group Taxi (www.bluebirdgroup.com):

REGULAR TAXI

BLUE BIRD & PUSAKA : (+62-21) 7917 1234 / 794 1234 (24 hours)

RATE

- Starting Rp. 6,000.-
- Per km Rp. 3,000.-
- Waiting Rp. 30,000.- per hour

EXECUTIVE TAXI

SILVER BIRD : (+62-21) 798 1234 (24 hours)

RATE

- Starting Rp. 15,000.-
- Per km Rp. 6,000.-
- Waiting Rp. 60,000.- per hour
- Cars Toyota Alphard or Mercedez Benz



HOTELS

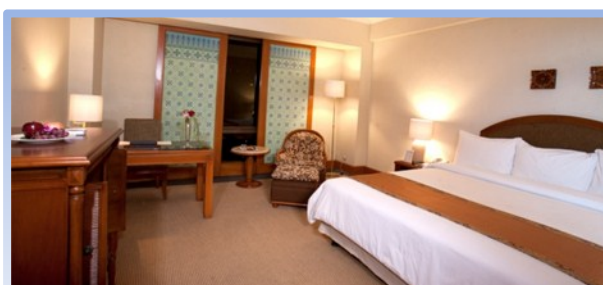
THE SULTAN HOTEL (HEADQUARTER HOTEL)



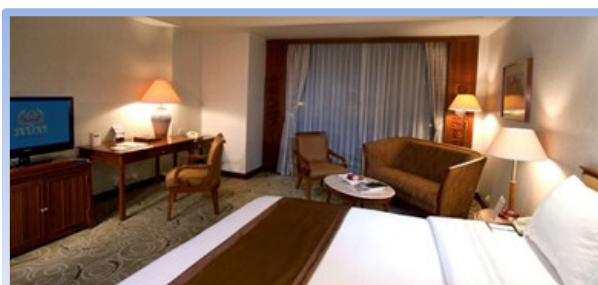
The Official Hotel is the Sultan Hotel (5-stars), located in Senayan area, the strategic junction of Jakarta's Central Business District at Centre Jakarta, and started its operation in 1976. The Sultan Hotel is a landmark in the heart of Jakarta.

The complete amenities offered by The Sultan Hotel Jakarta naturally make it the ideal location to host events. The hotel is the regular venue for International Jazz Music Festivals and various other international music concerts. Its proximity to the Senayan Sport Complex and the government buildings also make it the choice location to host international sport events, conferences, government gatherings, and other prominent events. There are four major supermarkets, and fast food restaurant nearby the hotel.

Deluxe Room



Grand Deluxe Room





The special room rate for Deluxe Room (single/double) is **USD 110.-** and Grand Deluxe Room is **USD 125.-** per night (inclusive of 10% service charge and 11% government tax) **with buffet breakfast** for 2 pax at the designated venue, two bottles of mineral water per day, internet access in room, and in room coffee/tea making facilities. This special rate is offered with the condition that confirmed orders with full payment are received **on or before 20th June 2012**. In addition to that, **there is no guarantee of any room to be available for reservation**. Please bring along your credit card for hotel check-in.

Contact Address:

THE SULTAN HOTEL
JL.GATOT SUBROTO
JAKARTA 10002
INDONESIA
TEL.: +62 21 5703600
FAX.: +62 21 5733089
EMAIL: hotel@sultanjakarta.com

Or for details of the hotel, please visit hotel website:
<http://www.sultanjakarta.com>

ATLET CENTURY PARK HOTEL

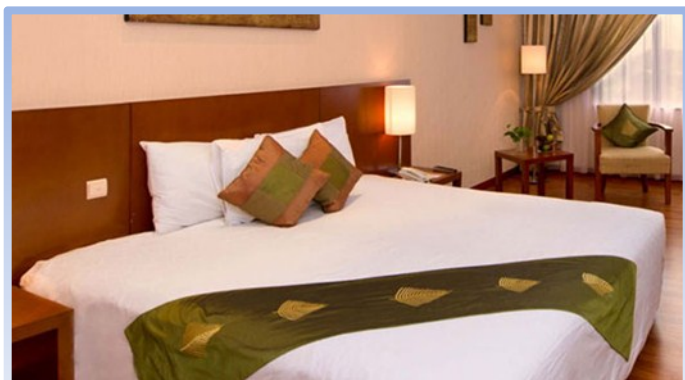


Atlet Century Park Hotel is a 4 stars hotel, located in the heart of Jakarta's Central Business District and just steps away from the most prestigious shopping centers, Hotel Atlet Century Park provides the perfect destination for business and leisure purposes, as well as to Tennis Indoor Senayan, the venue of WKF Karate1 Premier League.

With 475 spacious and newly renovated rooms, Hotel Atlet Century Park reflects the spacious grandeur of its surroundings, spectacular view and plenty opulence, all with more than a hint of individuality.

The special room rate for Deluxe Room (single/double) is **USD 90.-** per night (inclusive of 10% service charge and 11% government tax) **with buffet breakfast** for 2 pax at the designated venue, two bottles of mineral water per day, 4 hours free broadband internet access in room, and in room coffee/tea making facilities. As like The Sultan Hotel, this special rate is offered with the condition that confirmed orders with full payment are received **on or before 20th June 2012**. In addition to that, **there is no guarantee of any room to be available for reservation**. Please bring along your credit card for hotel check-in.

Deluxe Room



Contact Address:

ATLET CENTURY PARK HOTEL

Jl. Pintu Satu Senayan

Jakarta 10270

Indonesia.

Phone: +62 21 5712041

Fax: +62 21 571 2191

Email: reservation@atletcentury.com

Or for details of the hotel, please visit hotel website:

<http://www.atletcentury.com>